

Measures 1-8 of the piece. The key signature is one sharp (F#) and the time signature is 4/4. The melody in the treble clef starts with a quarter note G4, followed by eighth notes A4-B4-C5, and a quarter note D5. Measures 5 and 6 contain an 8-measure rest in both staves.

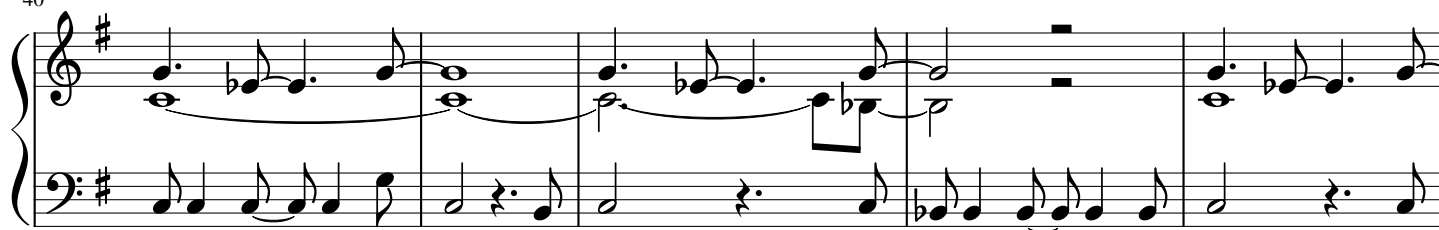
Measures 9-16. Measure 9 has a 2/4 time signature change. Measure 10 has a 4/4 time signature change. The melody continues with eighth and quarter notes. Measures 11 and 12 feature a 4-measure rest in the bass staff.

Measures 17-24. The melody consists of continuous eighth-note patterns in the treble staff. The bass staff has rests in measures 17, 18, 20, 21, and 22.

Measures 25-33. Measure 25 has a 3-measure rest in the bass staff. Measure 26 has a 4-measure rest in the bass staff. Measure 27 contains a repeat sign. Measure 28 has a 3-measure rest in the bass staff. Measure 29 has a 4-measure rest in the bass staff.

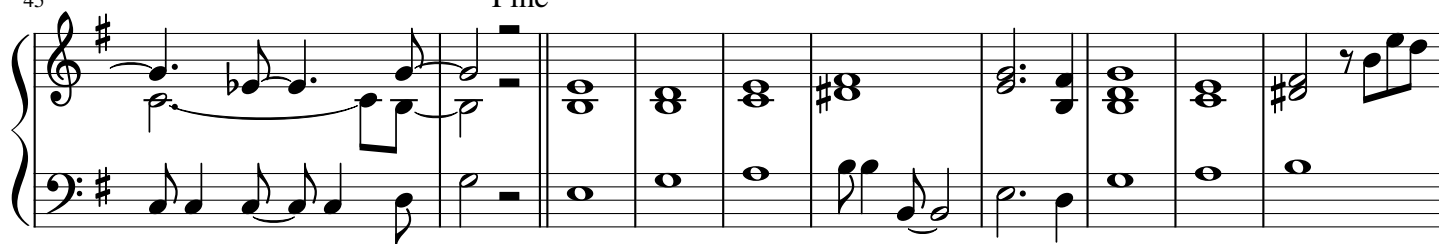
Measures 34-41. Measure 34 has a 4-measure rest in the bass staff. Measure 35 has a 4-measure rest in the bass staff. Measure 36 has a 4-measure rest in the bass staff. Measure 37 has a 4-measure rest in the bass staff. Measure 38 has a 2/4 time signature change. Measure 39 has a 4/4 time signature change. Measure 40 has a 4-measure rest in the bass staff. Measure 41 has a 4-measure rest in the bass staff.

40



45

Fine



55



61

D.S. al Fine

